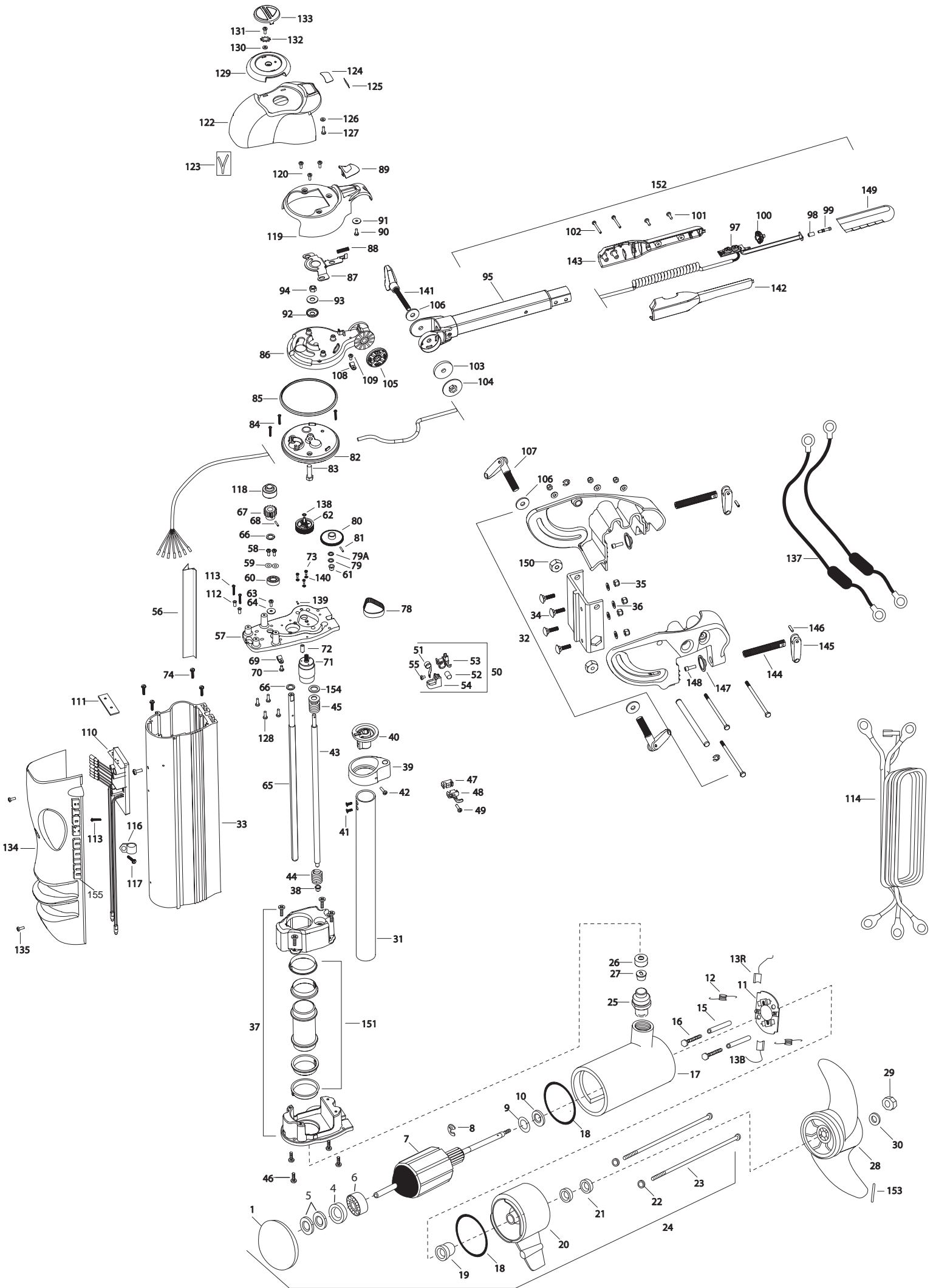


VANTAGE 80
80 LBS THRUST
24 VOLT 56 AMPS

for use with "O" serial numbers
2-year warranty



| | | | | | | | | |
|-----|-----------|--|------|---------|---|------|---------|--------------------------------------|
| 1 | 421-276 | PLAIN END HOUSING ASSEMBLY | *57 | 2051927 | TOP PLATE, VANTAGE | *106 | 2051737 | WASHER-FLAT, ID.406 X OD.8 |
| 4 | 990-045 | THRUST SPACER | 58 | 2053414 | SCREW-#8-32 X 1/2 TRI-LOBE[2.EA] | *107 | 2050922 | HANDLE, TENSION, SHORT |
| 5 | 992-010 | SPRING WASHER [2.EA] | 59 | 2051717 | WASHER-#8 SAE FLAT ZNK PLT [2.EA] | 108 | 2052510 | CABLE CLAMP, 3/16" VANTAGE [2.EA] |
| 6 | 140-010 | BALL BEARING | *60 | 2057306 | BEARING-BALL (VANTAGE) | 109 | 2053415 | SCREW-#8-32 X 3/8" TRI-LB[3.EA] |
| 7 | 2-100-214 | ARMATURE ASSEMBLY 24V 4" | *61 | 2057302 | BEARING-UPPER, LIFT SCREW | *110 | 2774041 | CNTRL BRD ASSY 24/36V W/PAD INCL.111 |
| 8 | 788-040 | RETAINING RING | *62 | 2052630 | PIN, CLUSTER GEAR | *111 | 2315105 | INSULATING PAD |
| 9 | 990-051 | WASHER-THRUST, STEEL | 63 | 2053415 | SCREW-#8-32 X 3/8 TRI-LOBE P | 112 | 2261712 | SHOULDER WASHER [2.EA] |
| 10 | 990-052 | WASHER- NYLATRON | 64 | 2051716 | WASHER-FENDER #10 | 113 | 2053407 | SCREW-#8-32 X .75 PPH[3.EA] |
| ■ | 2-600-144 | BRUSH/WIRE/PLATE ASSEMBLY INCL.11-13 | 65 | 2052001 | SHAFT-STEERING, VANTAGE | 114 | 2051220 | LEADWIRE,24/36V,3 CONDUCT |
| *11 | 738-004 | BRUSH PLATE 4" TERMINAL | 66 | 2051706 | WASHER-SPRING SUPPORT[2.EA] | 116 | 2052512 | CABLE CLAMP, 1/2" VANTAGE |
| *12 | 975-041 | SPRING -TORSION [2.EA] | 67 | 2052205 | GEAR, STEERING TUBE MACHINED | 117 | 2053415 | SCREW-#8-32 X 3/8" TRI-LOBE P |
| 13 | 188-094 | BRUSH | *68 | 2052615 | PIN-DRIV-LOK 1/8 X 1 1/8 | 118 | 2052210 | ROLLER-STEERING SHAFT |
| 15 | 973-025 | SPACER -BRUSH PLATE [2.EA] | 69 | 2052510 | CABLE CLAMP, 3/16' VANTAGE | ■ | 2880102 | CONTROL HEAD COVER LATCH KIT |
| 16 | 830-027 | SCREW -SELF THREADED 10-32 X 2" [2.EA] | 70 | 2053415 | SCREW-#8-32 X 3/8 TRI-LOBE P | | | INCL. 89,90,91,119 |
| 17 | 2-200-160 | CENTER HOUSING FIELD ASSEMBLY | 71 | 2777812 | MOTOR-LIFT (12,24,36V) | 119 | 2050200 | COVER-CONTROL HEAD |
| 18 | 701-043 | O-RING (2 REQ'D) | 72 | 2058411 | TENSIONER-BELT (VANTAGE) | 120 | 2053415 | SCREW-#8-32 X 3/8" TRI-LOBE[3.EA] |
| 19 | 144-017 | BEARING -FLANGE | 73 | 2053422 | SCREW - 3MM | 121 | 2012100 | SCREW-8-18 X 5/8" THD CUT[3.EA] |
| 20 | 2-300-160 | BRUSH END HOUSING ASSEMBLY | 74 | 2053413 | SCREW-10-16X1' TYPE AB,HEX[4.EA] | 122 | 2050211 | SHROUD-CONTROL HEAD |
| 21 | 880-025 | SEAL [2.EA] | ■ | 2882201 | CLUSTER GEAR / FLANGE PULLEY KIT | 123 | 2055612 | DECAL-SHROUD (VANTAGE)[2.EA] |
| 22 | 701-009 | O-RING -THRU BOLT [2.EA] | | | INCL. 75,76,77 | 124 | 2055604 | DECAL-COVER, 24V |
| ■ | 2889460 | SEAL & ORING KIT INCL. 18, 21, & 22 | *75 | 2770428 | PULLEY/PINION GEAR ASSEMBLY | 125 | 2055610 | DECAL-COVER, LED |
| 23 | 830-094 | THRU BOLT 12-24 X10.31[2.EA] | *76 | 2058405 | FLANGE-PULLEY (VANTAGE) | 126 | 2051712 | WASHER- .152 ID, .50 OD, .06 |
| 24 | 2316271 | MOTOR ASSEMBLY, 4', 24V | *77 | 2053418 | SCREW 4-40 X 1/4 PPH[2.EA] | 127 | 2302100 | SCREW-6-20 X 1/2" THD CUT |
| 25 | 979-015 | STRAIN RELIEF - BODY | 78 | 2050800 | BELT-DRIVE (VANTAGE) | 128 | 2012100 | SCREW-8-18 X 5/8" THD CUT(4REQ'D) |
| 26 | 9950339 | CAP - STRAIN RELIEF | 79 | 2051705 | WASHER-NYLON ID.312 X OD. | 129 | 2050110 | KNOB-POINTER, VANTAGE |
| 27 | 2382900 | GROMMET- STRAIN RELIEF | 79A | 2051703 | WASHER-THRUST ID.315, OD.562 | 130 | 2051717 | WASHER- #8 SAE FLAT ZNK PLT |
| 28 | 2331160 | PROPELLER (W.WEDGE 2) MAX 101 | ■ | 2882200 | GEAR LIFT/PIN KIT INCL.80,81 | 131 | 2332101 | SCREW-8-32 X 1/2" SS |
| 29 | 2093101 | NUT-PROP NYLOC (LARGE) MAX 101 | *80 | 2990426 | LIFT GEAR ASSEMBLY | 132 | 2371715 | LOCKWASHER-STAR #8 ZINC |
| 30 | 2091701 | WASHER-PROP (LARGE) MAX 101 | 81 | 2052620 | PIN-DRIV-LOK 1/8 X 5/8" | 133 | 2056700 | PLUG, POINTER, VANTAGE |
| 31 | 2772010 | TUBE-MOTOR, 1 3/4" KIT W/TEMPLATE | 82 | 2056520 | CAP-LOWER, GEAR HOUSING | 134 | 2050220 | SHIELD-EXTRUSION, VANTAGE |
| 32 | 2991822 | TRANSOM BRACKET ASSEMBLY 36V | 83 | 2383500 | BOLT-3/8-16 X 1.25 | 135 | 2053414 | SCREW-#8-32 X 1/2" TRI-LOBE[2.EA] |
| 33 | 2056505 | HOUSING EXTRUSION | 84 | 2053402 | SCREW-10-24 X 1" TRI-LOBE [3.EA] | 136 | 2055611 | DECAL-SHIELD (VANTAGE)[2.EA] |
| 34 | 2053511 | BOLT-CARRIAGE 5/16-18 1"[4.EA] | 85 | 2054600 | O-RING, GEAR HOUSING | 137 | 2998200 | CIRCUIT BRKR ASSEMBLY 36V [2.EA] |
| 35 | 2151726 | WASHER-5/16 STD (S/S)[4.EA] | 86 | 2056510 | CAP-UPPER, GEAR HOUSING | 138 | 2051732 | WASHER .315 X .562 |
| 36 | 2053103 | NUT, 5/16-18 NYLOC [4.EA] | 87 | 2057200 | LATCH (VANTAGE) | 139 | 2053420 | SET SCREW #8-32 |
| 37 | 2770420 | LOWER SUPPORT CAGE ASSEMBLY | 88 | 2052711 | SPRING, LATCH RETURN | 140 | 2051710 | LOCKWASHER 3MM |
| 38 | 2057302 | BEARING-UPPER, LIFT SCREW | 89 | 2050102 | KNOB-LATCH (VANTAGE) | 141 | 2050921 | HANDLE TENSION - LONG |
| ■ | 2881510 | YOKE/BEARING RACE KIT INCL.39,40,42 | 90 | 2353401 | SCREW-10-16 X 1/2 STALGD | ■ | 2880910 | HANDLE L/R KIT |
| *39 | 2051510 | YOKE-LIFT SCREW | 91 | 2051716 | WASHER-FENDER #10 | | | INCL. 100,101,102,142,143,150 |
| *40 | 2056200 | BEARING RACE-YOKE | 92 | 2151730 | WASHER-CUP (HINGE BRACKET) | *142 | 2050916 | HANDLE SIDE L |
| 41 | 2053401 | SCREW-10 X 1/2,TYPE 25,[2.EA] | 93 | 2051737 | WASHER-3/8 FLAT (ZINC) | *143 | 2050911 | HANDLE SIDE R |
| 42 | 2353401 | SCREW-10-16 X 1/2 STALGD | 94 | 2053107 | NUT-3/8-16, TOPLOCK | ■ | 2880925 | HANDLE/CLAMP SCREW KIT |
| 43 | 2053400 | SCREW-LIFT, 1/2-10 ACME | 96 | 2990921 | HANDLE ASSEMBLY, VANTAGE | | | INCL. 2 EA OF 144-148 |
| 44 | 2052707 | SPRING-COIL,SOFT STOP | ■ | 2884106 | HANDLE CTRL BOARD/GRIP KIT INCL. 97,149 | *144 | 2051300 | SCREW-CLAMP 5/8X4 |
| 45 | 2770429 | COIL SPRING/WASHER ASSEMBLY KIT | *97 | 2994005 | CTRL BOARD ASSEMBLY-HANDLE | *145 | 2050925 | HANDLE-CLAMP SCREW |
| 46 | 2053413 | SCREW-10-16X1' TYPE AB,HEX(4REQ'D) | 98 | 2055115 | BUTTON SWITCH ACTUATOR | *146 | 2052625 | PIN-COILED SPRING |
| ■ | 2883200 | WIRE CLAMP KIT INCL. 47,48,49 | ■ | 2883701 | PLUNGER/GRIP KIT INCL. 99,149 | *147 | 2011710 | WASHER-CLAMP SCREW |
| *47 | 2053200 | WIRE CLAMP, LEFTHAND | *99 | 2053700 | PLUNGER, ON/OFF | *148 | 2263402 | SCREW- 1/4-20X3/4" |
| *48 | 2053205 | WIRE CLAMP, RIGHTHAND | 100 | 2050111 | KNOB-SPEED CONTROL | 149 | 2880424 | GRIP KIT |
| *49 | 2053417 | SCREW-10-16X3/4 TYPE BT,PPH | 101 | 2012100 | SCREW-8-18 X 5/8" THD CUT[2.EA] | *150 | 2053105 | NUT- HEX |
| 50 | 2770400 | TAPE SPRING ASSEMBLY INCL. 51-55 | 102 | 2053412 | SCREW 8 X 1.5"TYPE 25 PPH[2.EA] | 151 | 2881500 | TUBE/SLEEVE/BUSHING KIT |
| 51 | 2052705 | SPRING, CONSTANT FORCE | ■ | 2880921 | HANDLE TENSION KNOB KIT | 152 | 2990950 | HANDLE/CTRL BOARD ASSEMBLY |
| 52 | 2052610 | PIN-PIVOT 7/16" O.D. | | | INCL. 103,104,105,141 | 153 | 2262658 | PROP PIN |
| 53 | 2051920 | BRACKET-SPRING | *103 | 2051736 | WASHER-URETHN,ID.4 X OD 1 | 154 | 2340610 | CONNECTOR CABLE |
| 54 | 2052305 | WIRE GUIDE (VANTAGE) | *104 | 2053115 | NUT-WASHER, HANDLE ASSEMBLY | 155 | 2055611 | DECAL, SHIELD |
| 55 | 2053418 | SCREW #4-40X1/4 TYPE F,PPH | *105 | 2050015 | RACHET-DISK, HANDLE ASSEMBLY | | | |
| 56 | 2050225 | WIRE SHIELD | ■ | 2880920 | BRACKET TENSION HANDLE KIT | | | |
| ■ | 2770405 | TOP PLATE ASSEMBLY INCL.57,60,61,62,68 | | | INCL. 106,107,150 | | | |

24 Volt Systems- VANTAGE 80

24 Volt Systems:

1. Make sure that the motor is switched off (speed selector on "0").
2. Two 12 volt batteries are required.
3. The batteries must be wired in series, only as directed in wiring diagram, to provide 24 volts.
 - a. Connect the connector cable supplied with the motor to positive (+) terminal of battery 1 and to negative (-) terminal of battery 2.
 - b. Connect positive (+) red lead to positive (+) terminal on battery 2.
 - c. Connect the yellow (+) lead to positive (+) terminal on battery 1.
 - d. Connect negative (-) black lead to negative (-) terminal of battery 1.
4. For safety reasons do not switch the motor on until the propeller is in the water.

If installing a leadwire plug, observe proper polarity and follow instructions in your boat owner's manual.

Over-Current Protection Devices not shown in illustrations.

VANTAGE 80 24 VOLTS ONLY

